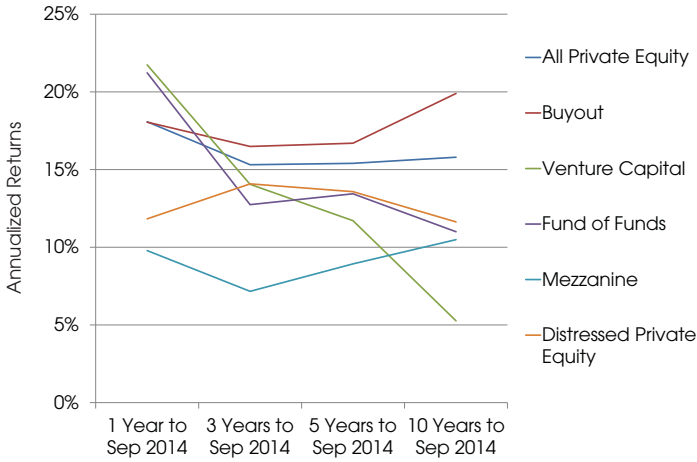


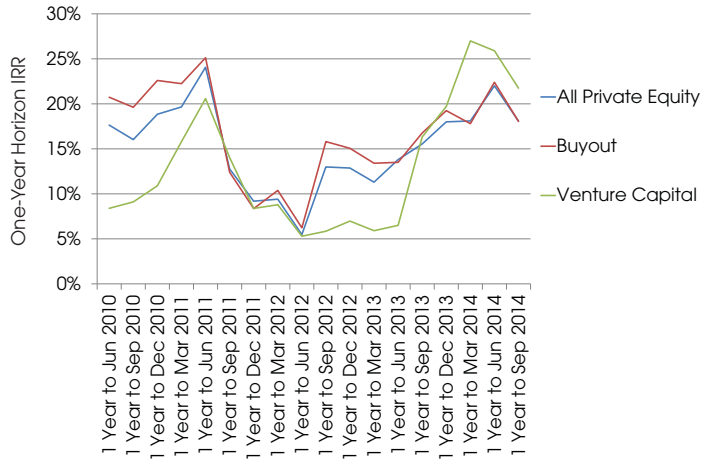
Q3 2014 Private Equity Performance Update

Fig. 1: Private Equity Horizon IRRs as of 30 September 2014



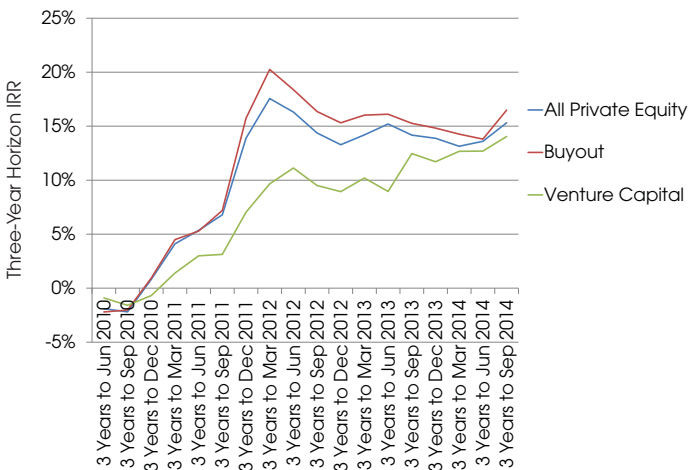
Source: Preqin Performance Analyst

Fig. 2: Rolling One-Year Horizon IRRs



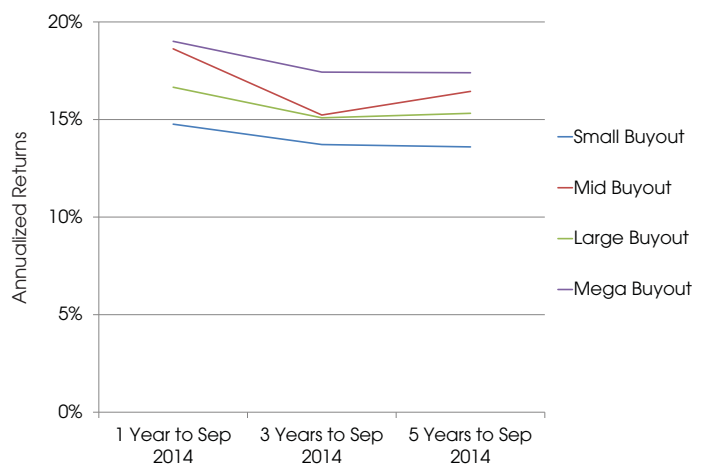
Source: Preqin Performance Analyst

Fig. 3: Rolling Three-Year Horizon IRRs



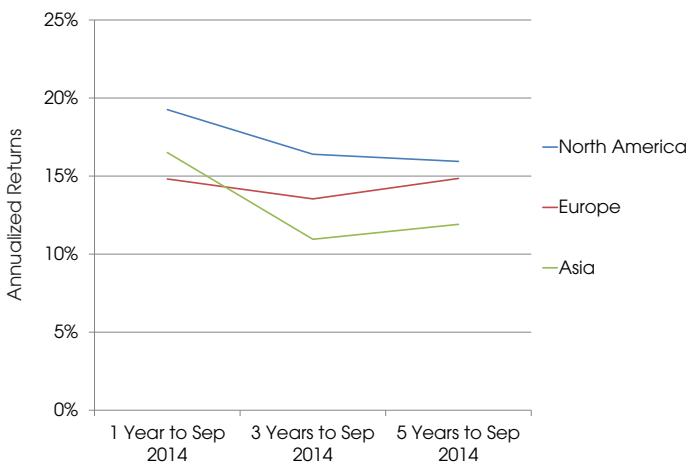
Source: Preqin Performance Analyst

Fig. 4: Buyout Fund Horizon IRRs by Size* as of 30 September 2014



Source: Preqin Performance Analyst

Fig. 5: Horizon IRRs by Fund Primary Region Focus as of 30 September 2014



Source: Preqin Performance Analyst

Data Source:

Preqin's **Performance Analyst** is the industry's most extensive source of net-to-LP private equity fund performance, with full metrics for over 7,300 named vehicles.

For more information, please visit:

www.preqin.com/pa

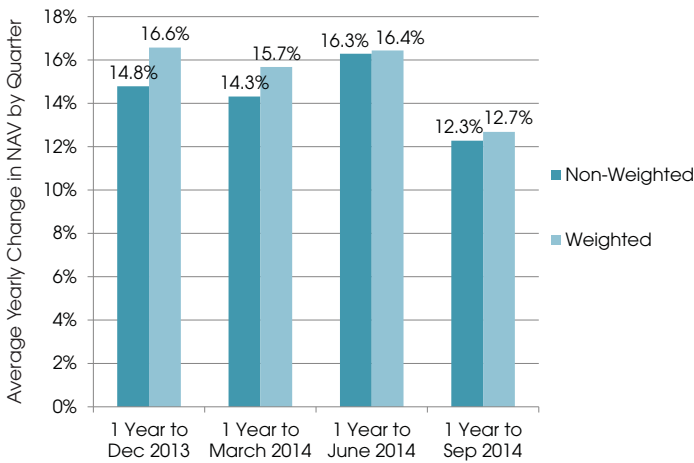
***Size ranges:**

Vintage 1992-1996: Small Buyout ≤ \$200mn, Mid Buyout \$201-500mn, Large Buyout > \$500mn

Vintage 1997-2004: Small Buyout ≤ \$300mn, Mid Buyout \$301-750mn, Large Buyout \$751mn-\$2bn, Mega Buyout > \$2bn

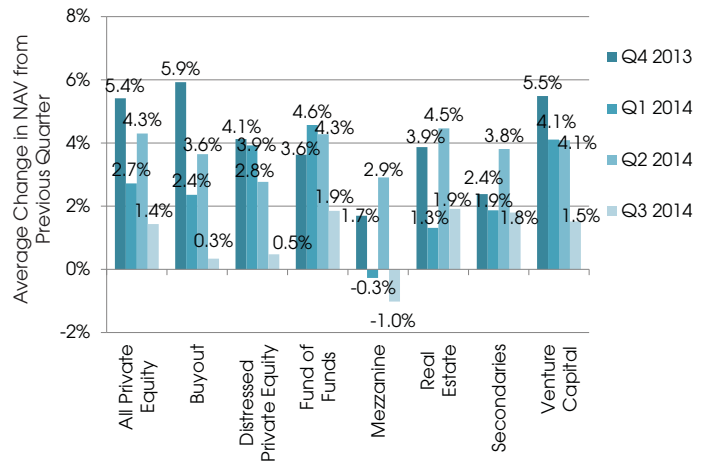
Vintage 2005 onwards: Small Buyout ≤ \$500mn, Mid Buyout \$501mn-\$1.5bn, Large Buyout \$1.51-4.5bn, Mega Buyout > \$4.5bn

Fig. 6: All Private Equity Yearly Change in NAV



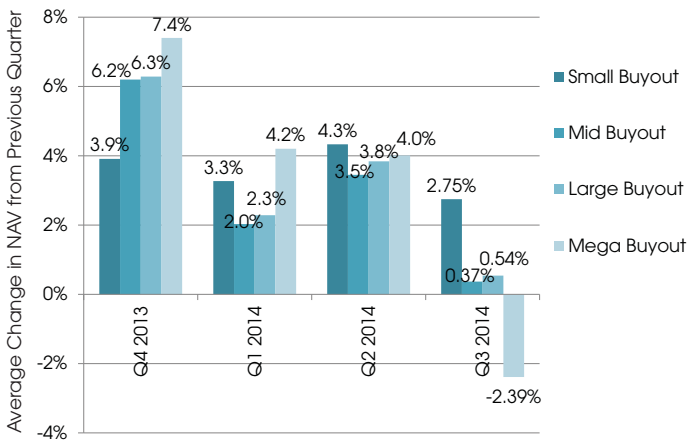
Source: Preqin Performance Analyst

Fig. 7: Quarterly Change in NAV by Fund Type (Non-Weighted)



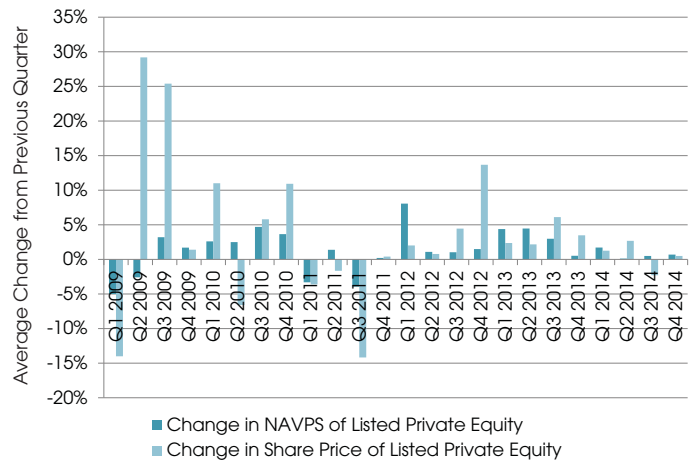
Source: Preqin Performance Analyst

Fig. 8: Quarterly Change in NAV by Buyout Fund Size**



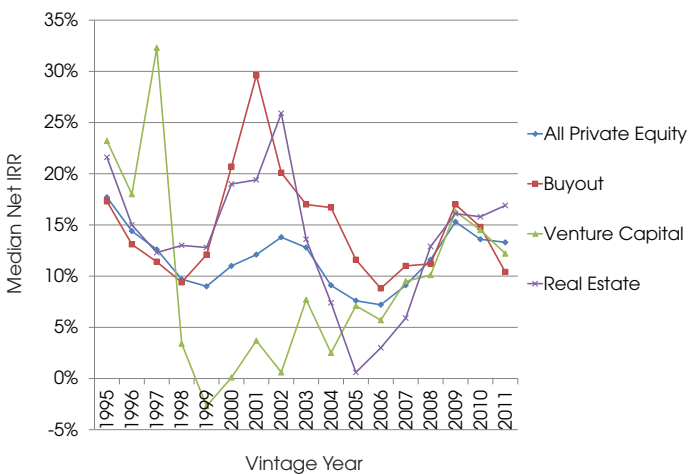
Source: Preqin Performance Analyst

Fig. 9: Change in NAVPS and Share Price of Listed Private Equity by Quarter



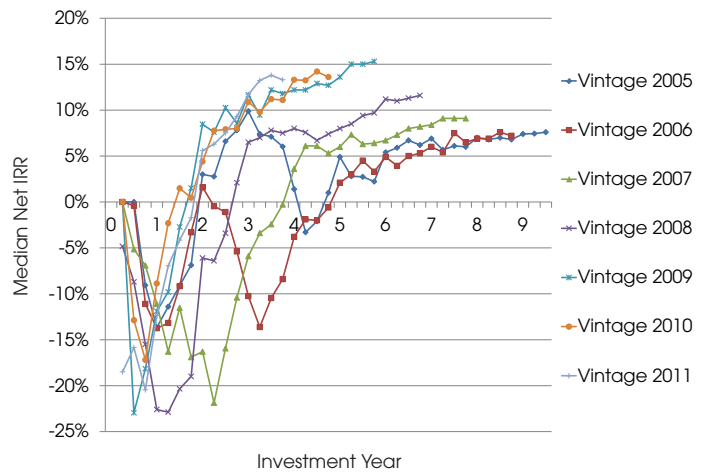
Source: Preqin Performance Analyst

Fig. 10: Median Net IRRs by Fund Type as of 30 September 2014



Source: Preqin Performance Analyst

Fig. 11: All Private Equity - J-Curve: Annual Median Net IRRs by Vintage Year



Source: Preqin Performance Analyst

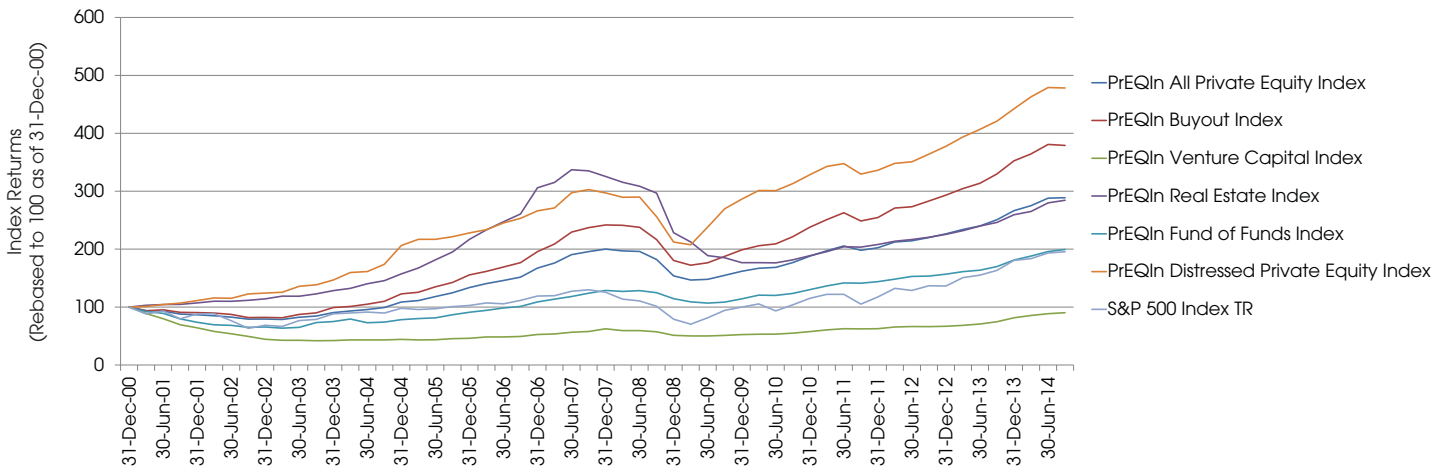
**Size ranges:

Vintage 1992-1996: Small Buyout ≤ \$200mn, Mid Buyout \$201-500mn, Large Buyout > \$500mn

Vintage 1997-2004: Small Buyout ≤ \$300mn, Mid Buyout \$301-750mn, Large Buyout \$751mn-\$2bn, Mega Buyout > \$2bn

Vintage 2005 onwards: Small Buyout ≤ \$500mn, Mid Buyout \$501mn-\$1.5bn, Large Buyout \$1.51-4.5bn, Mega Buyout > \$4.5bn

Fig. 12: PrEQIn - Private Equity Quarterly Index: All Strategies



Source: Preqin Performance Analyst

PrEQIn - Private Equity Quarterly Index

PrEQIn is the first quarterly index for the whole private equity industry, and a vital tool for investors seeking to compare the performance of private equity portfolios to those of other asset classes.

For free access to the Index, register for **Research Center Premium** by visiting: www.preqin.com/rcp

2015 Preqin Global Alternatives Reports

PRIVATE EQUITY | HEDGE FUNDS | REAL ESTATE | INFRASTRUCTURE | PRIVATE DEBT

The 2015 reports form the most comprehensive review of the alternatives investment industry ever undertaken:

Read contributions from some of the industry’s leading figures.

Understand the latest trends.

Access analysis and statistics on fundraising, performance, deals, investors, fund managers and much more.



For more information or to purchase your copies, please visit:

www.preqin.com/reports