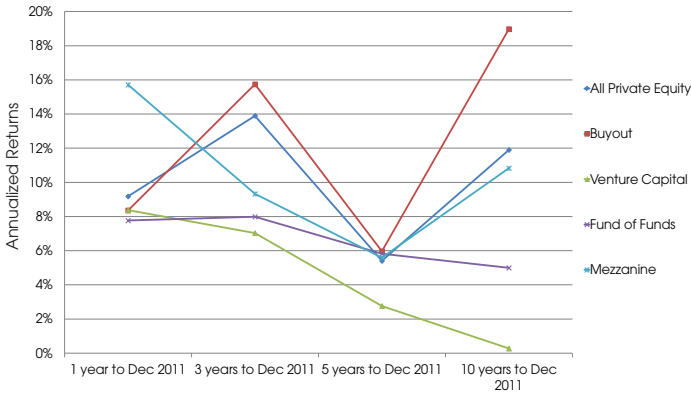




# Private Equity Performance

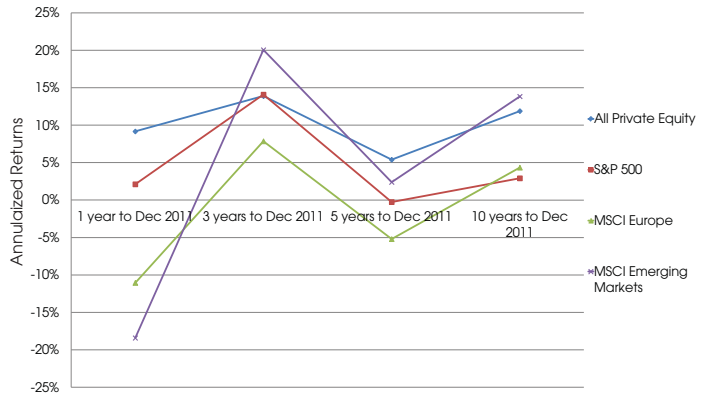
Anna Strumillo examines private equity performance figures as of 31st December 2011.

Fig. 1: Private Equity Horizon IRRs as of 31st December 2011



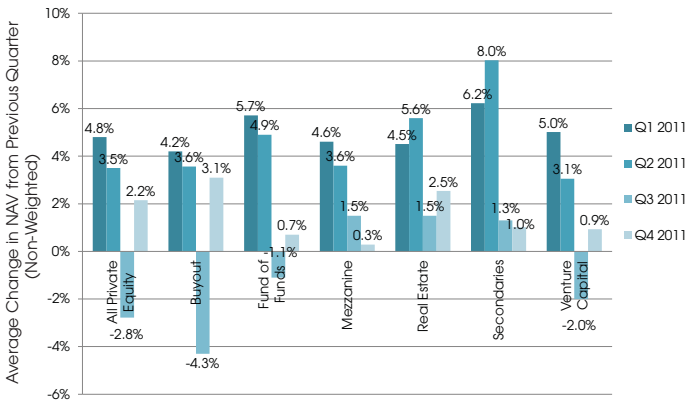
Source: Preqin Performance Analyst

Fig. 2: Private Equity Horizon IRR vs. Public Indices as of 31st December 2011



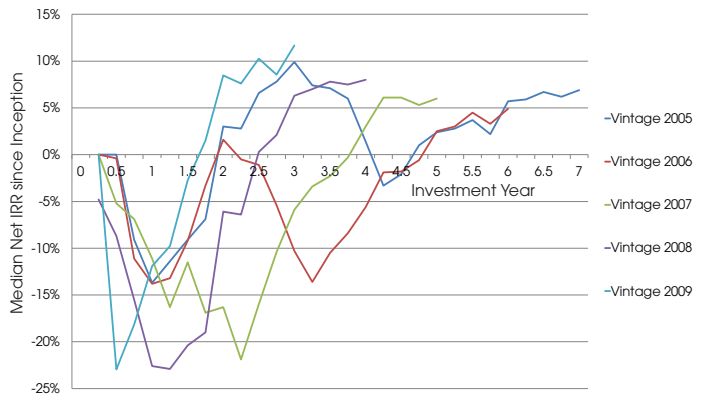
Source: Preqin Performance Analyst

Fig. 3: Quarterly Change in Net Asset Value (NAV) by Fund Type



Source: Preqin Performance Analyst

Fig. 4: All Private Equity - J-Curve: Annual Median Net IRRs by Vintage



Source: Preqin Performance Analyst

## Data Source:

Preqin's [Performance Analyst](#) offers fund-level performance data for over 6,000 private equity funds and is the world's most extensive and transparent database of private equity and venture capital fund performance.

Interested in finding out how [Performance Analyst](#) can help you? Please visit: [www.preqin.com/pa](http://www.preqin.com/pa)

To register for free access to our private equity performance benchmarks service please visit: [www.preqin.com/benchmarks](http://www.preqin.com/benchmarks)