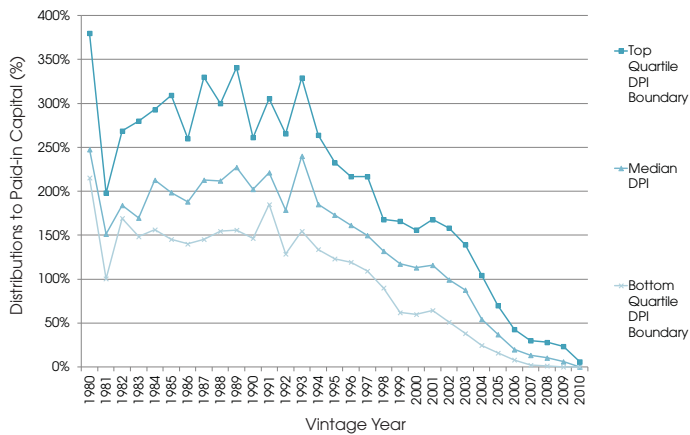




# DPI and RVPI Benchmark Figures

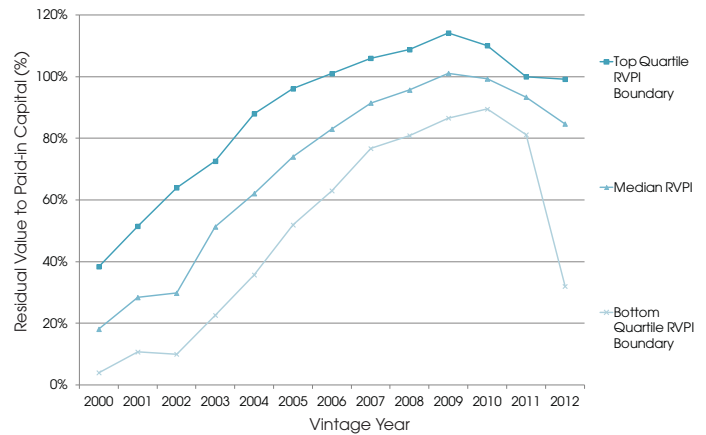
Hayley Wong takes a look at the distributions to paid in (DPI) and residual value to paid in (RVPI) benchmark figures that have recently been added to Preqin's complimentary Benchmarks service.

Fig. 1: All Private Equity Funds - Median DPI and Quartile Boundaries by Vintage Year



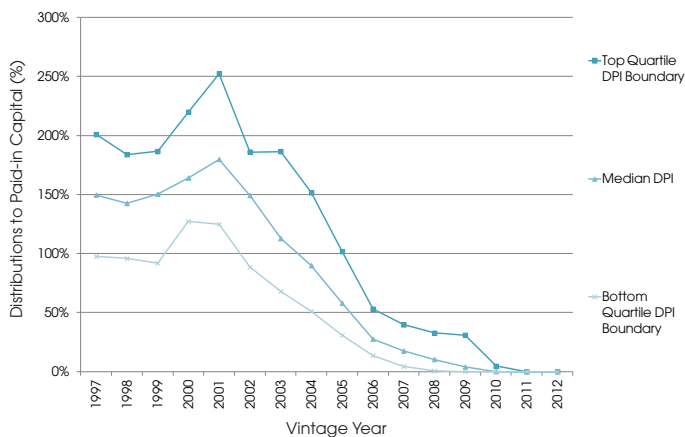
Source: Preqin Performance Analyst

Fig. 2: All Private Equity Funds - Median RVPI and Quartile Boundaries by Vintage Year



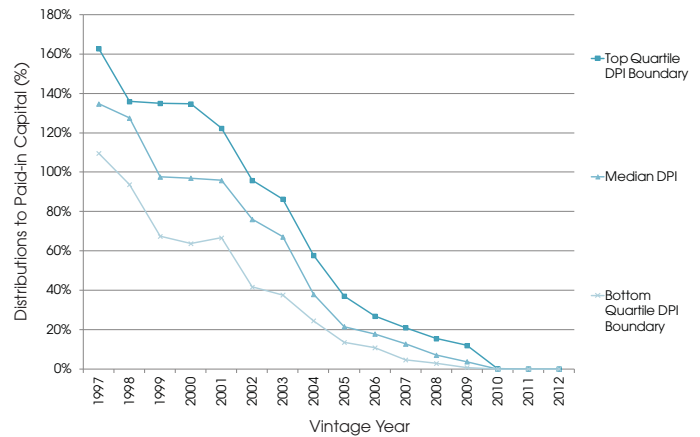
Source: Preqin Performance Analyst

Fig. 3: Buyout Funds - Median DPI and Quartile Boundaries by Vintage Year



Source: Preqin Performance Analyst

Fig. 4: Funds of Funds - Median DPI and Quartile Boundaries by Vintage Year



Source: Preqin Performance Analyst

## Data Source:

Benchmark figures – median, top quartile boundary and bottom quartile boundary – for the distributions to paid-in capital and residual value to paid-in capital ratios are now available for a variety of private equity fund types via Excel download on Preqin's complimentary Benchmarks service – click [here](#) to register now.

Preqin's [Performance Analyst](#) offers fund-level performance data for over 6,000 named private equity funds and is the world's most extensive and transparent database of private equity and venture capital fund performance. Interested in finding out how [Performance Analyst](#) can help you? Please visit:

[www.preqin.com/pa](http://www.preqin.com/pa)